

JOHN KEBLE SCHOOL  
Hursley





## **JOHN KEBLE SCHOOL**

Hursley

The John Keble Church of England Primary School is situated in the village of Hursley, just south-west of Winchester. The school is located at the edge of the village in an enviable rural setting. Much of the school is surrounded by open fields with woodlands in the distance. Built in 1927, the school is set in extensive grounds which include a playground, sports field, woods, a conservation area and pond. With a building extension completed in 1999, the school provides accommodation for over one hundred pupils aged from four to eleven years old.













This is therefore a remarkable school which is highly favoured in terms of its location, its traditions, its teachers and its pupils. However, the school faces a major obstacle in its efforts to improve further, in the configuration, size and overall condition of the buildings that it occupies.

The existing school building has developed in phases. The first built in 1927 is a traditional school building constructed from red brick with a pitched roof. To one side is situated a modern extension in a similar side. On the other side are extensions which were built in the late 1960s, consisting of the hall and the school kitchen. The overall visual impact is not a pleasing one and a major objective of the project now under consideration is to deal with the visual disharmony and produce a building or series of buildings which sit easily with each other and with their rural surroundings.

# JOHN KEBLE SCHOOL

**Hursley**

## Project Details

Location  
**Hursley, Hampshire**

Completion Date  
**2008**

Contract Value  
**£422,000**

Area  
**210 sqm**

## Awards

IBStock Downland Prize  
Shortlisted  
**2008**

## Project Team

Client  
**John Keble School  
Governing Body**

Architect  
**Design Engine**

Structural Engineer  
**Integral Design**

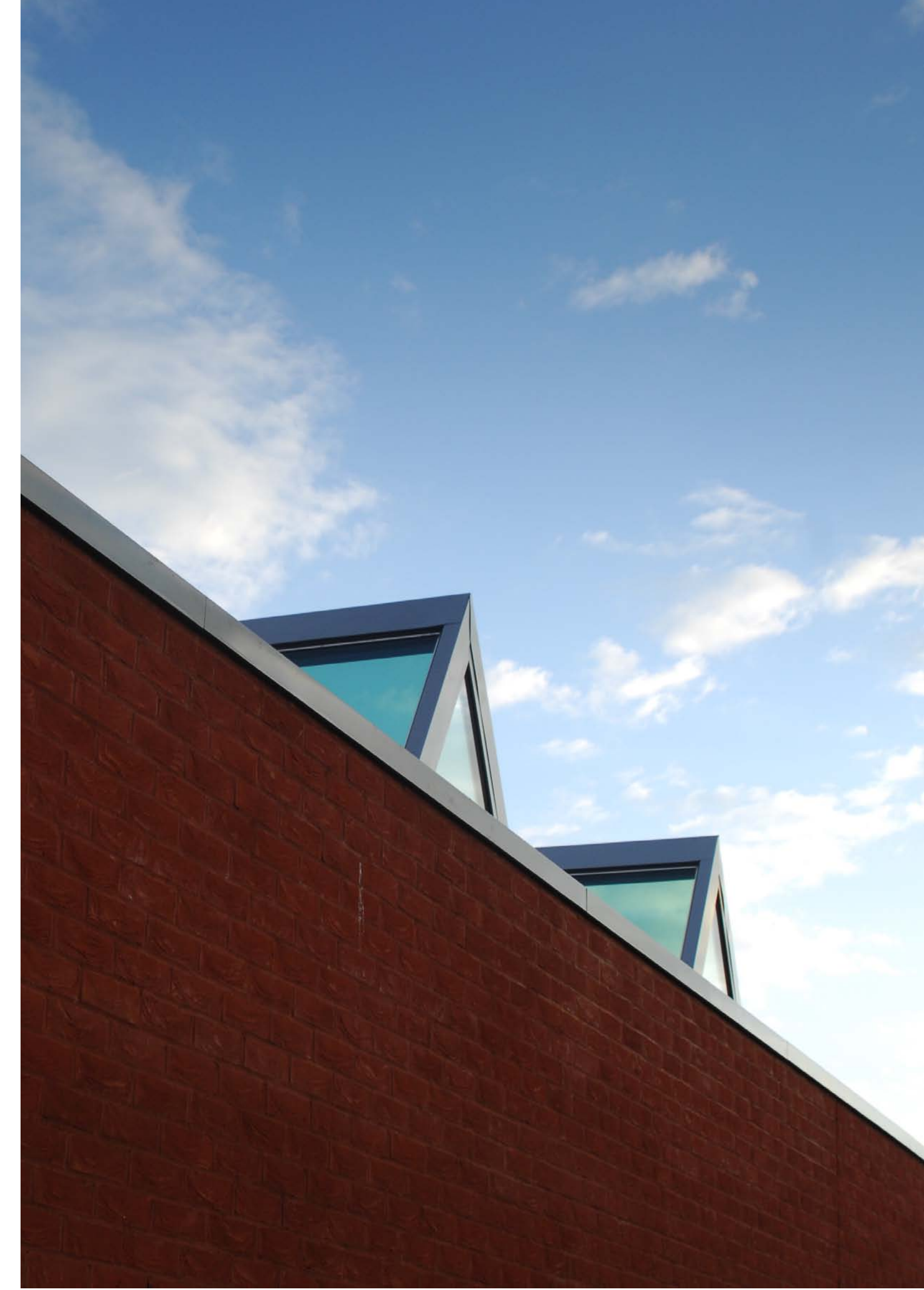
Building Services Engineer  
**Ernest Griffith & Sons**

Quantity Surveyor  
**John Smith Projects**

CDMC  
**John Smith Projects**

Building Control Approved  
Inspector  
**Winchester City Council**

Main Contractor  
**RW Armstrong & Sons**



**Design Engine** Architects Ltd  
The Studio, Coker Close  
Winchester SO22 5FF

T.+44(0)1962 890111  
F.+44(0)1962 890222

**[www.designengine.co.uk](http://www.designengine.co.uk)**