

JOHN PAYNE BUILDING  
Oxford Brookes University



## **JOHN PAYNE BUILDING**

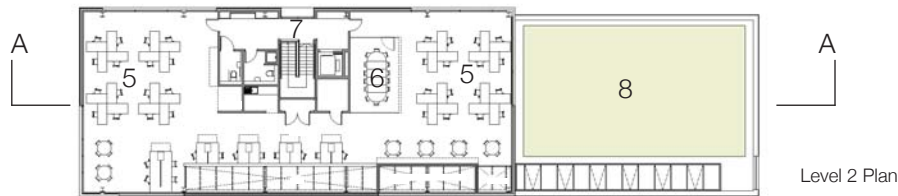
Oxford Brookes University

The new John Payne Building at Oxford Brookes University Headington Campus is complete, representing the first phase of the masterplan for the campus. The £4m, 15,000sqft facility accommodates the relocated architectural workshop and material testing laboratory from buildings due for demolition, plus two floors of office space above. The building has been designed as a foil for the new development, and is detailed with crisp black cladding with strategic accent colour referenced from the machinery inside the technical areas.

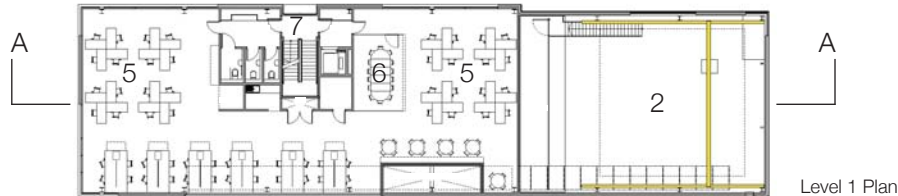




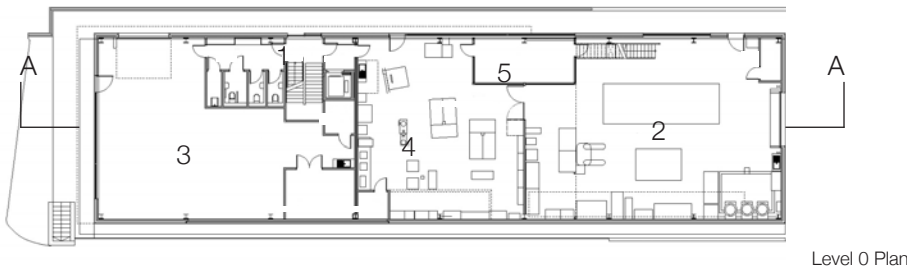




The University has an in-house team of carpenters, electricians and plumbers. The Maintenance Workshop provides part of that provision, accommodating one of these trades. Associated with the workshops are administrative staff as well as estate management staff. The two floors of office accommodation provide space for these positions.

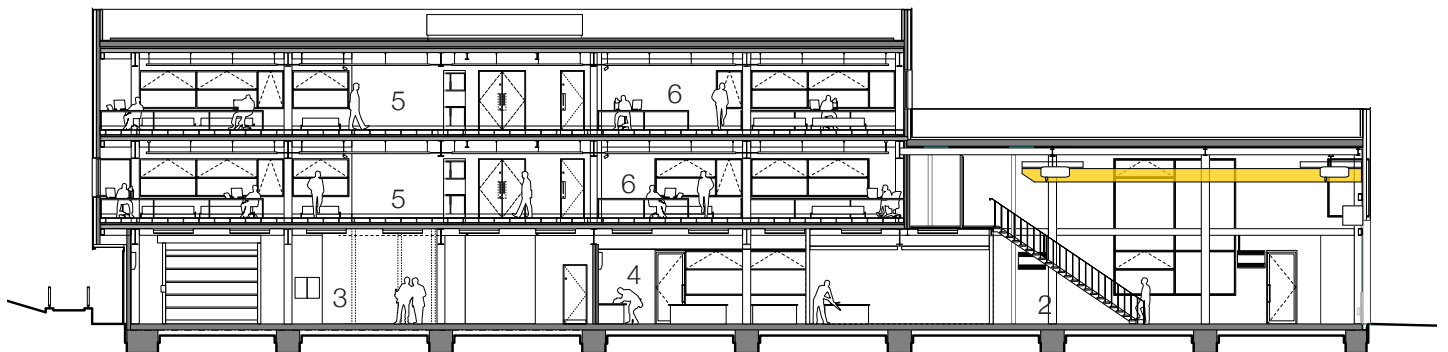


The Architectural Workshop is provided for the benefit of students studying architecture. It is used for the construction of architectural models, installations and is a key component in the success of the architectural course at Oxford Brookes. Co-locating the facility with the technology laboratory provides greater flexibility in delivering courses within the school. The Technology Laboratory has a dual purpose. The facility is used both for teaching as well as research.



The design proposals have been developed through an ongoing briefing process with Oxford Brookes University. The building provides accommodation for the decanting of existing facilities across the Gipsy Lane Campus. In summary the project consists of an Architectural Workshop, Technology Laboratory, Maintenance Workshop and two floors of office accommodation, now the home of the Estates Department.

- 1. Entrance
- 2. Technology Lab
- 3. Maintenance Workshop
- 4. Architectural Workshop
- 5. Office
- 6. Meeting Room
- 7. Lobby
- 8. Green Roof



Section AA

# JOHN PAYNE BUILDING

## Oxford Brookes University

### Project Details

Location  
**Oxford**

Completion Date  
**2009**

Contract Value  
**£4.1m**

Area  
**1500 sqm**

### Awards

BREEAM  
**Very Good**

### Project Team

Client  
**Oxford Brookes University**

Architect  
**Design Engine**

Structural Engineer  
**Dewhurst Macfarlane & Partners**

Building Services Engineer  
**Capita Symonds**

Quantity Surveyor  
**Cyril Sweett Ltd**

Specification Writer  
**John Ahern**

Fire Engineering Consultant  
**Butler & Young**

CDMC  
**Ridge & Partners**

Building Control Approved  
Inspector  
**Butler & Young**

BREEAM Assessor  
**Sandy Brown Associates**



**Design Engine** Architects Ltd  
The Studio, Coker Close  
Winchester SO22 5FF

T.+44(0)1962 890111  
F.+44(0)1962 890222

[www.designengine.co.uk](http://www.designengine.co.uk)